



Bath Touch Metals Pvt Ltd



ABOUT US

Bath Touch Metals Pvt Ltd is privately owned engineering company started in 1985 which is specializing in **Sand Casting, Resin Casting, Shell Molding & Stamping**, with floor area of 200000 sq ft. & Exporting to worldwide.

Located at Rajkot, Gujarat, INDIA.

History of - Bath Touch

Since 1985

More About Us

Bath Touch provide **ONE STOP** solution for all type of customized **casting parts** from Brass, Bronze, Copper, Aluminum. Our **Primary products** are Grounding, Earthing, Pole line hardware, Terminal connectors, Transformer accessories and other. We have more than **140 people's** strong trainee team through which we are helping our customer in **designing** parts, helping in **manufacturing** simple to complex parts, in helping to check **functionality** and **durability** of parts.

Bath Touch has not only stretched the limits and increased production capacity but also **achieved perfection** in precision **high quality** range of casting components.

Delivery **Practical** and **tailored solution** to complex problem, we even push the boundaries of the traditional and **modern method** of engineering to create **new standards** to provide better resolution to client needs.



Since 1985

What we are doing

Main Process

1. CASTING

- Sand Casting
- Resin Casting
- Shell Molding

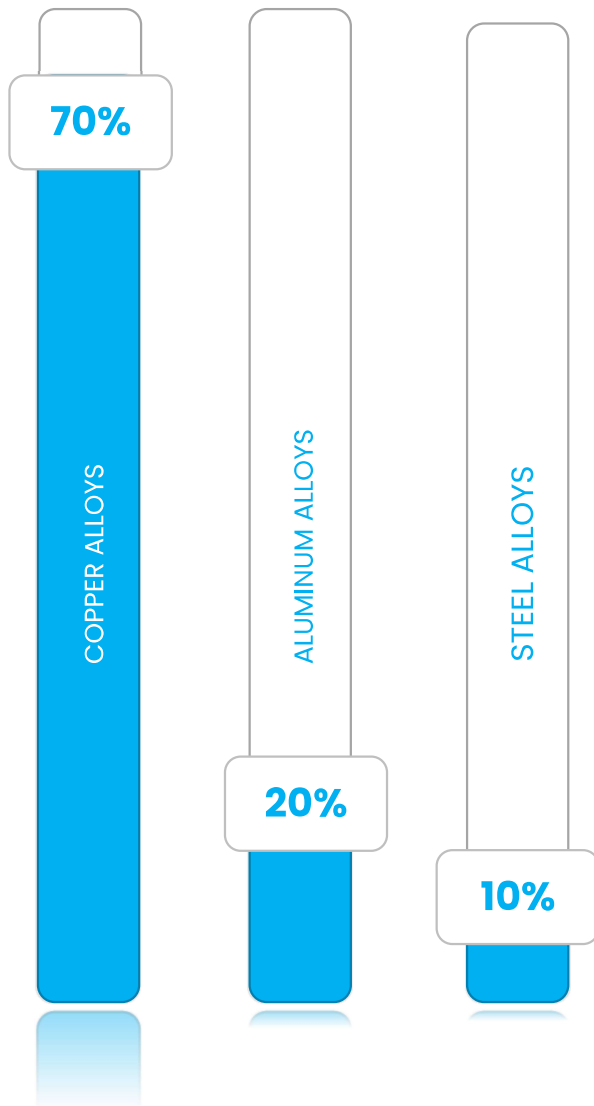
2. STAMPING

Other Process

- Drilling
- Tapping
- Grinding
- Plating
- Bending
- Welding
- Shot-Blasting
- Assembly



Since 1985



Material in which we works

1. Copper Alloys

- Brass (360, 260)
- Red Brass (833, 836, 838, 844, 848)
- Bronze (952, 954, 955, 956, 865, 836, 878)
- Aluminum Bronze (952, 953, 954, 955, 958, 3091)

2. Aluminum Alloys

- LM5
- LM6

3. Steel Alloys

- Ductile Iron
- Grey Iron

Since 1985

Virtual Company Visit



Rasin Sand Mixture



Mixed Sand Stock

Since 1985

Virtual Company Visit



Shell Molding + Foundry



Belter & Grinder

Since 1985

Virtual Company Visit



Shot Blasting + Roller Thread Machine



Drill + Power Press

Since 1985

Virtual Company Visit



Drill



Offices



Tools

Since 1985

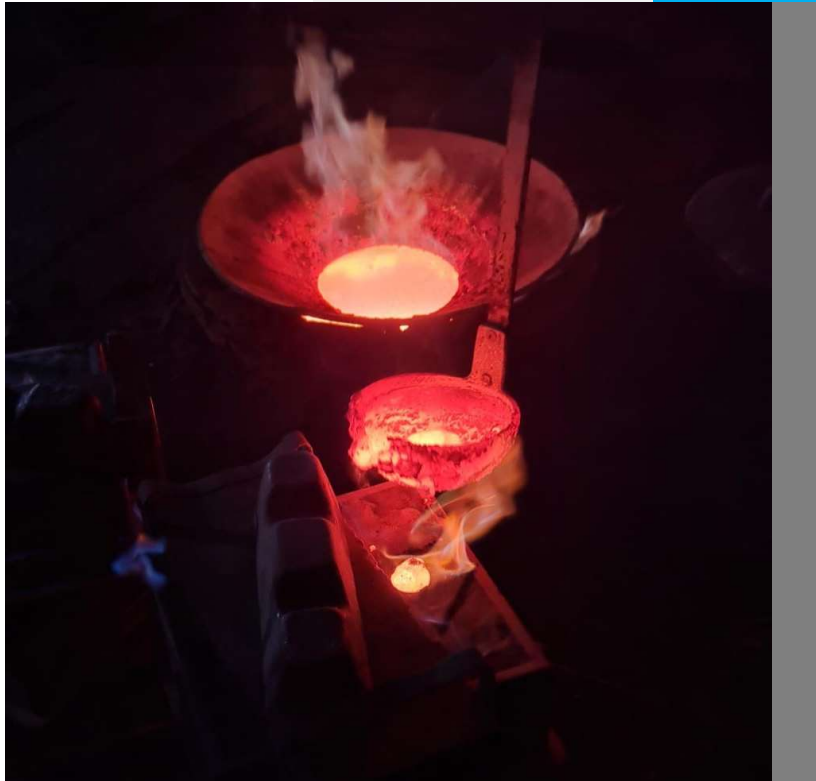
Products Photos



Since 1985

Products Photos





Competences

- 4-ELECTRONIC INDUCTION FURNACE (250KG)
- INHOUSE RASIN SAND MIXURE
- SHELL MOLDING MACHINE – 8
- SHELL CORE SHOOTER – 5
- HAND DRILL – 40
- AUTOMATIC DRILL – 5
- LETHE MACHINE – 7
- POWER PRESS – 18
- GRINDER/BELTER – 20
- SHOT BLASTING MACHINE – 2
- WELDING MACHINE – 3
- THREAD ROLLING MACHINE – 2

Since 1985

Quality

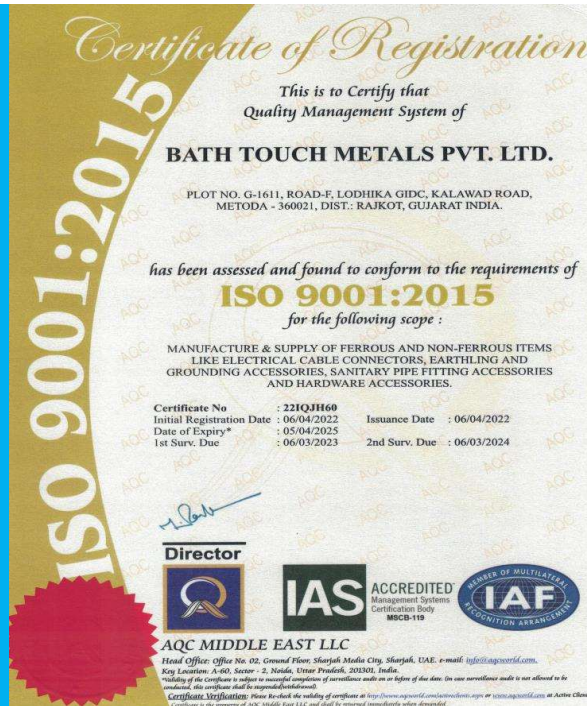
Bath Touch accredited with **ISO 9001:2015** and we are using core tools of other standard like **REACH, ROHS, CE** and other to ensure that products are manufactured, confirm to this quality standards.

Our **Quality Objective** are deliver the products with high quality, on time delivery with lowest cost.

We are **maintaining** quality by

- Drawing and process design from customer drawing in stage wise production process
- First Piece Approval
- PFMEA
- 8D-Report & CAPA
- PPAP Level 3 Documents
- Well Documented Inspection Process at all stage
- Documents support and storage upto 3 years..

Since 1985



Best Quality from **Bath Touch**

Slip Load Test

We do a Slip test in Hot Line Clamp with 100 lbs weight for 48 hours, for the best performance result, it must not loosen its grip in 48 hours.

Best Quality from **Bath Touch**



Product List

Hot Line Clamp



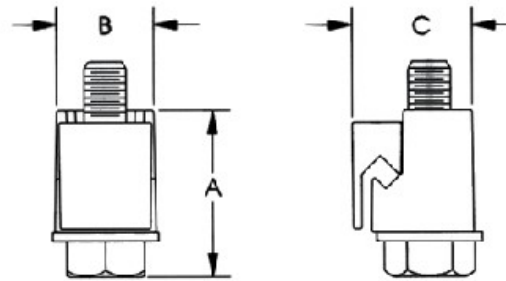
Item No.	Connection Type		Main Line Range Dia. (inch)	Main Line Range Size (MCM/AVG)	Tap Line Range Dia. (inch)	Tap Line Range Size (MCM/AVG)
	Run	Tap				
C1520	CU	CU	0.128" - 0.414"	#8 sol – 2/0 str	0.128" - 0.414"	#8 sol – 2/0 str
C1520P	CU	CU	0.128" - 0.414"	#8 sol – 2/0 str	0.128" - 0.414"	#8 sol – 2/0 str
C1520A	AL	AL	0.128" - 0.414"	#8 sol – 2/0 str	0.128" - 0.414"	#8 sol – 2/0 str
C1520AP	AL	AL	0.128" - 0.414"	#8 sol – 2/0 str	0.128" - 0.414"	#8 sol – 2/0 str
C1530	CU	CU	0.162" - 0.745"	#6 sol – 400 MCM	0.152" - 0.682"	#6 sol – 4/0 str
C1530P	CU	CU	0.162" - 0.745"	#6 sol – 400 MCM	0.152" - 0.682"	#6 sol – 4/0 str
C1530A	AL	AL	0.162" - 0.745"	#6 ACSR – 336.4 MCM	0.152" - 0.682"	#6 sol – 4/0 str
C1530AP	AL	AL	0.162" - 0.745"	#6 ACSR – 336.4 MCM	0.152" - 0.682"	#6 sol – 4/0 str
C1540	CU	CU	0.502" - 1.031"	4/0 ACSR – 800MCM	0.198" - 0.703"	#4 sol – 350MCM
C1540P	CU	CU	0.502" - 1.031"	4/0 ACSR – 800MCM	0.198" - 0.703"	#4 sol – 350MCM
C1540A	AL	AL	0.502" - 1.031"	4/0 ACSR – 800MCM	0.198" - 0.703"	#4 sol – 350MCM
C1540AP	AL	AL	0.502" - 1.031"	4/0 ACSR – 800MCM	0.198" - 0.703"	#4 sol – 350MCM

P: Plating, A: Aluminum

Since 1985

Product List

Bronze Vise Connector

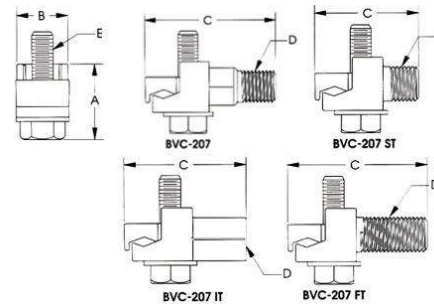


Item No.	Conductor Diameter Range	Bolt Thread Size	Bolt Hex Size	A	B	C
BVC-2	6 sol – 2 sol	5/16"	9/16"	1.33	0.81	0.93
BVC-20	4 sol- 1/0 str	5/16"	9/16"	1.72	0.80	1.03
BVC-20S	3 sol – 2/0 str	3/8"	9/16"	1.91	0.94	1.19
BVC-2S	5 sol – 2 str	5/16"	9/16"	1.52	0.79	0.93
BVC-4	8 sol – 4 str	5/16"	9/16"	1.13	0.73	0.83
BVC-40	1/0 sol – 4/0 str	3/8"	9/16"	2.14	0.95	1.27
BVC-6	10 sol – 6 str	1/4"	3/8"	0.88	0.64	0.73

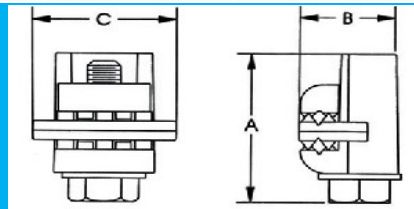
Since 1985

Product List

Bronze Vise Connector



Item No.	Conductor Diameter Range	Bolt Thread Size	Bolt Hex Size	A	B	C	D
BVC-207	8 sol – 1/0 str	5/16"	9/16"	1.02	0.77	2.00	1/2"-13
BVC-2207 FT	8 sol – 1/0 str	5/16"	9/16"	1.02	0.77	1.50	1/2"-13
BVC-2070 IT	8 sol – 1/0 str	3/8"	9/16"	1.02	0.77	2.00	3/8"-16
BVC-207 ST	8 sol – 1/0 str	5/16"	9/16"	1.02	0.77	1.75	1/2"-13

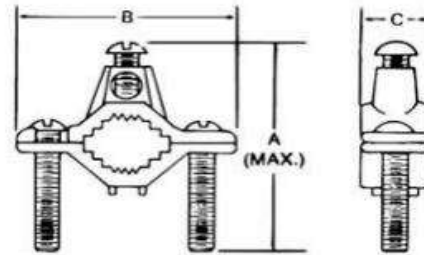


Item No.	Messenger Diameter Range	Ground Tap Diameter	Bolt Thread Size	Bolt Hex Size	A	B	C
BVC-167P	0.146" - 0.312"	0.146" - 0.312"	5/16"	9/16"	1.56	0.89	1.27

Since 1985

Product List

Water Pipe Clamps (J)

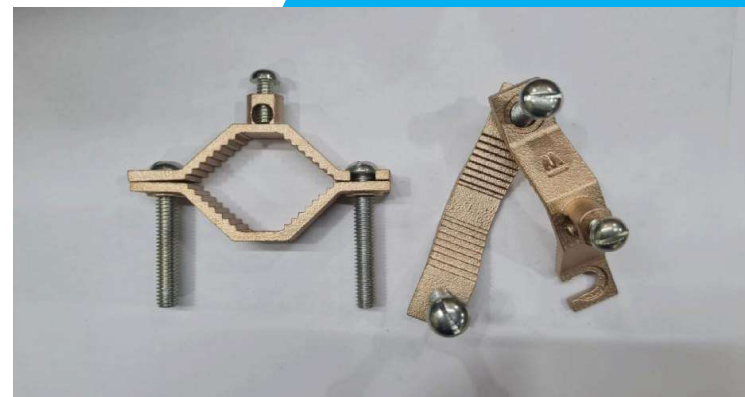
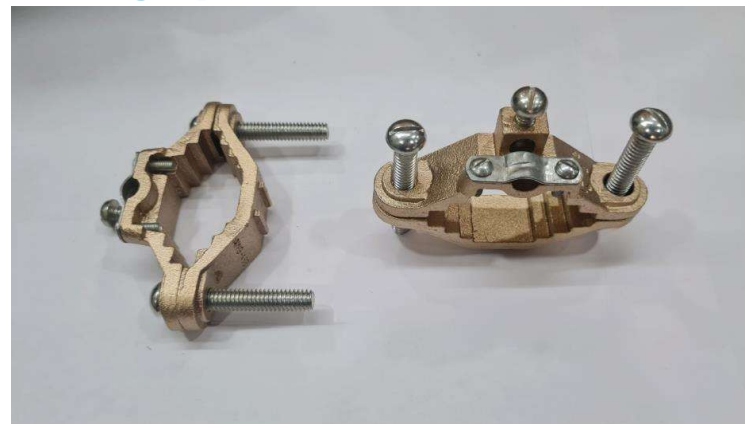


Item No.	Water Pipe Size	Conductor Size (Max.)	Wire Range (Min.)	A	B	C
BTJ	1/2"-1"	# 2 str	# 10 sol.	2 3/4	2 11/32	23/32
BTJ2	1 1/4"-2"	# 2 str	# 10 sol.	3 3/4	3 1/2	13/16
BTJ2124	2 1/2"-4"	# 4 str	# 10 sol.	6	6 5/16	1
BTJ6	4 1/4"-6"	# 4 str	# 10 sol.	7 1/4	8 1/8	1
BTJD	1/2"-1"	# 2 str	# 10 sol.	2 3/4	2 11/32	23/32
BTJ2D	1 1/4"-2"	# 2 str	# 10 sol.	3 3/4	3 1/2	13/16
BTJJR	1/2"-1"	# 2 str	# 10 sol.	2 15/32	23/32	17/32

Since 1985

Product List

Water Pipe Clamps (Other Design)

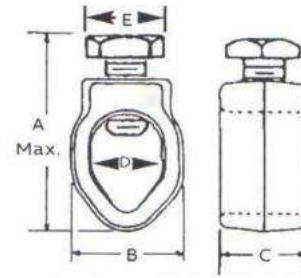


For more details like size,
material, plating kindly
Contact us

Since 1985

Product List

Budget Line Ground Clamps

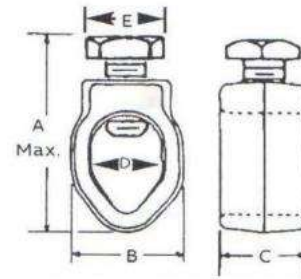


Item No.	Ground Rod Size	Wire Range (Max.)	Wire Range (Min.)	Screw Size	A	B	C	D	E
BTG3	3/8"	4 str	10 sol	5/16-18	1-3/8	11/16	1/2	27/64	3/8
BTG4	1/2"	2 str	10 sol	3/8-16	-	27/32	3/8	37/64	1/2
BTG5	1/2" & 5/8", #4 Rebar	2 str	10 sol	3/8-16	-	29/32	3/8	43/64	1/2
BTG6	3/4"	2 str	10 sol	3/8-16	-	1-1/16	3/8	13/16	1/2
BTG3P	3/8"	4 str	10 sol	5/16-18	1-3/8	11/16	1/2	27/64	3/8
BTG4P	1/2"	2 str	10 sol	3/8-16	-	27/32	3/8	37/64	1/2
BTG5P	1/2" & 5/8", #4 Rebar	2 str	10 sol	3/8-16	-	29/32	3/8	43/64	1/2
BTG6P	3/4"	2 str	10 sol	3/8-16	-	1-1/16	3/8	13/16	1/2

Since 1985

Product List

Universal Ground Rod Clamps

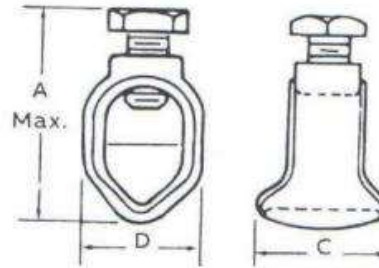


Item No.	Ground Rod Size	Wire Range (Max.)	Wire Range (Min.)	Screw Size	A	B	C	D	E
BTUGRC38	3/8"	1 str	8 sol	5/16-18	1.535	1.050	0.812	0.652	-
BTUGRC12	1/2"	1 str	8 sol	5/16-18	1.535	1.050	0.812	0.652	-
BTUGRC58	5/8"	1 str	8 sol	5/16-18	1.535	1.050	0.812	0.652	-
BTUGRC34	3/4"	1 str	8 sol	5/16-18	1.535	1.050	0.812	0.652	-

Since 1985

Product List

Ground Rod Clamps-WB Series



Item No.	Ground Rod Size	Wire Range (Max.)	Wire Range (Min.)	Screw Size	A Socket Screw	A Hex Screw	B	C	D
BTWB12	1/2"	2 str	10 sol	1-19/32	1-19/32	-	27/32	7/8	19/32
BTWB58	5/8"	1/0 str	8 sol	1-27/32	1-27/32	-	29/32	1	11/16
BTWB34	3/4"	1/0 str	8 sol	2	2	-	11/16	1	13/16
BTWB1	1"	4/0 str	8 sol	2-1/4	2-1/4	-	1-1/8	1-1/16	1
BTWB12H	1/2"	2 str	10 sol	1-19/32	-	2-3/32	27/32	7/8	19/32
BTWB58H	5/8"	1/0 str	8 sol	1-27/32	-	2-13/64	29/32	1	11/16
BTWB34H	3/4"	1/0 str	8 sol	2	-	2-11/32	11/16	1	13/16
BTWB1H	1"	4/0 str	8 sol	2-1/4	-	3	1-1/8	1-1/16	1
BTWB58HH	3/8"	4 str	10 sol	5/16-18	-	5/16-18	29/32	1	11/16
BTWB34HH	1/2"	2 str	10 sol	3/8-16	-	3/8-16	11/16	1	13/16

Since 1985

Product List

Ground Rod Clamps (Other Design)



For more details like size,
material, plating kindly
Contact us

Since 1985

Product List

Transformer Tank Grounding Connectors

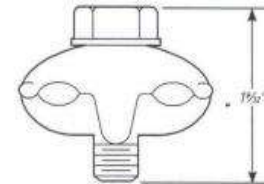
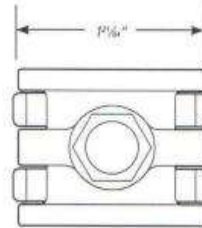


Item No.	Wire Range		Wire Range (Min.)	Wire Range (Max.)	Stud Thread Size	A	B	C
BTTTC2	2/0 str	8 sol	67.4	8.30	1/2-13	1-51/64	1-9/64	1-21/64
BTTTC2P	2/0 str	10 sol	67.4	8.30	1/2-13	1-51/64	1-9/64	1-21/64
BTTTC3	1 str	10 sol	42.4	5.20	1/2-13	1-3/8	1-3/64	1-3/8
BTTTC3P	1 str	8 sol	42.4	5.20	1/2-13	1-3/8	1-3/64	1-3/8
BTTTC4	1 str	10 sol	42.4	5.20	1/2-13	1-3/8	7/8	1-9/16
BTTTC4P	1 str	10 sol	42.4	5.20	1/2-13	1-3/8	7/8	1-9/16

Since 1985

Product List

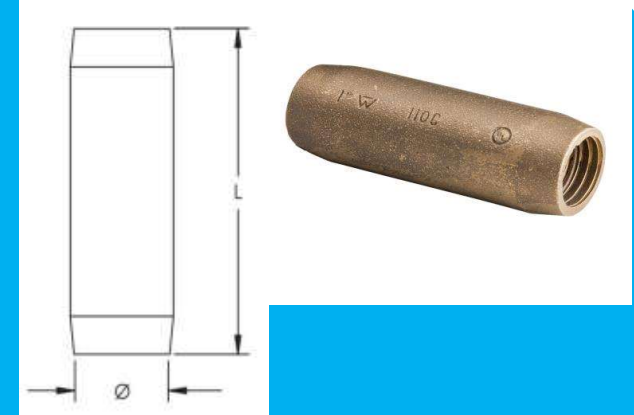
Jumper Cable Clamp- K Series



Item No.	Copper Groove (Max.)	Copper Groove (Min.)
BTK1	2/0 str Copper	8 sol Copper
BTK2	1/0 ASCR	6 ASCR 8 sol
BTK3	2/0 str Copper	8 sol Copper

Grounding Rod Coupling

Item No.	Rod Diameter	Thread Size
BT916C	1/2"	9/16"-12 UNC
BT58C	5/8"	5/8"-11 UNC
BT34C	3/4"	3/4"-10 UNC
BT1C	1"	1"-8 UNC



Since 1985

Product List

Grounding Clamp Connector



For more details like size, material, plating kindly Contact us



Since 1985

Product List

Lay-In Ground Clamp



Eye Bolts



For more details like size, material, plating kindly Contact us

Since 1985

Product List

Terminal Lug



Parallel Groove Connector

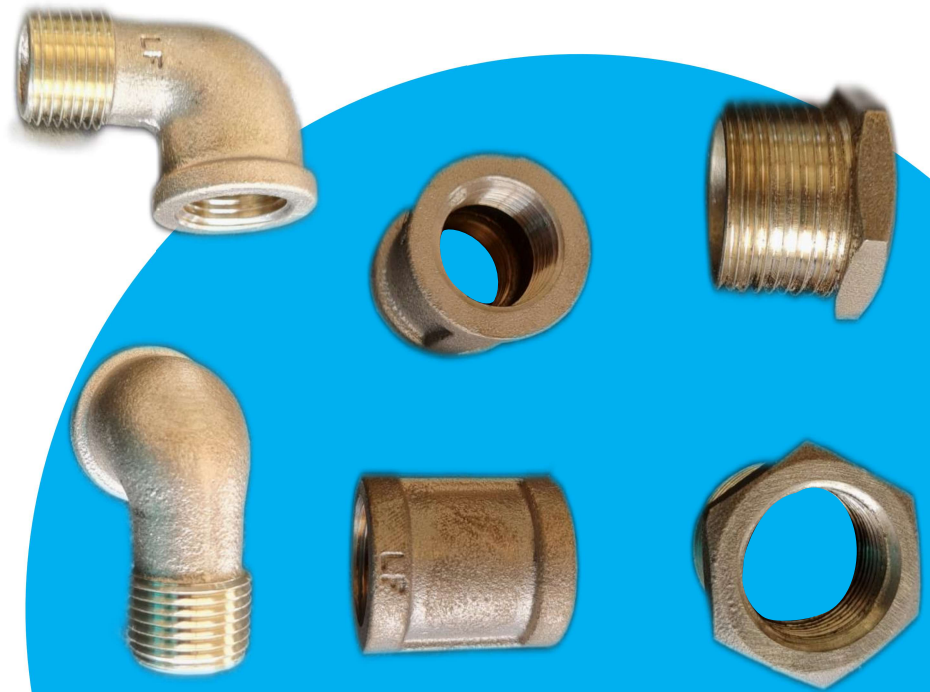


For more details like size, material, plating kindly Contact us

Since 1985

Product List

Fitting Parts



For more details like size, material, plating kindly Contact us

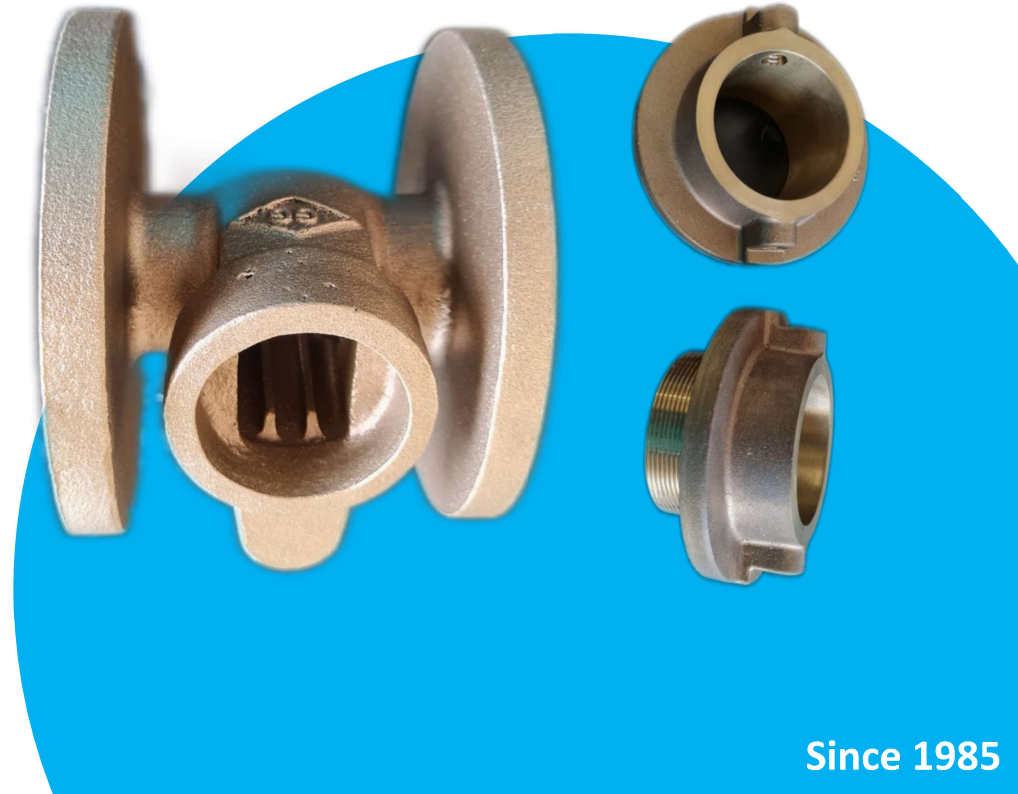
Since 1985

Product List

Water Meter Body



Some Other Fitting Parts



For more details like size, material, plating kindly Contact us

Since 1985

Product List

Aluminum Casting Parts

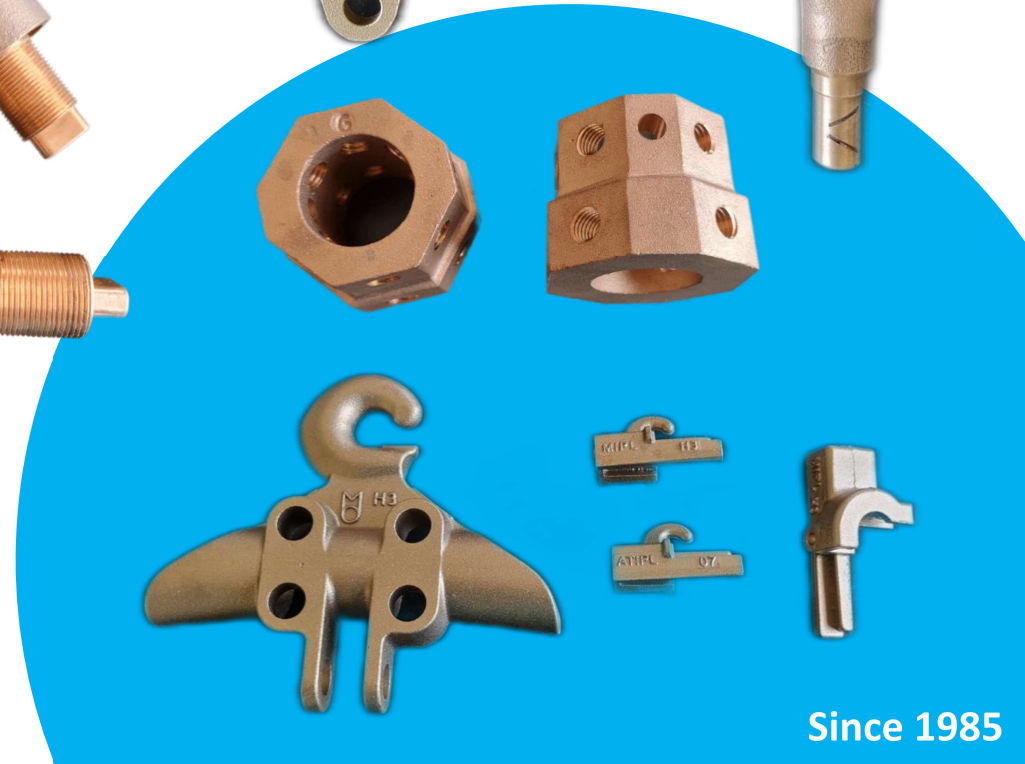
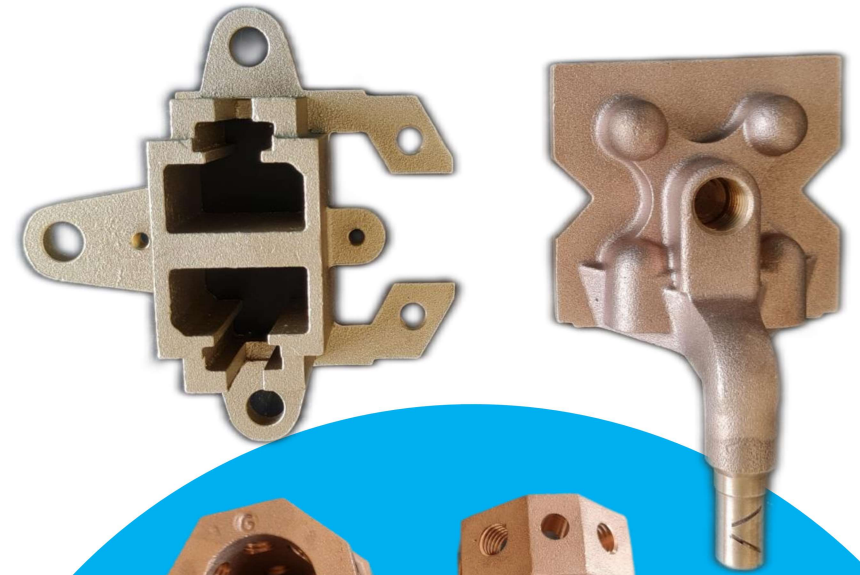
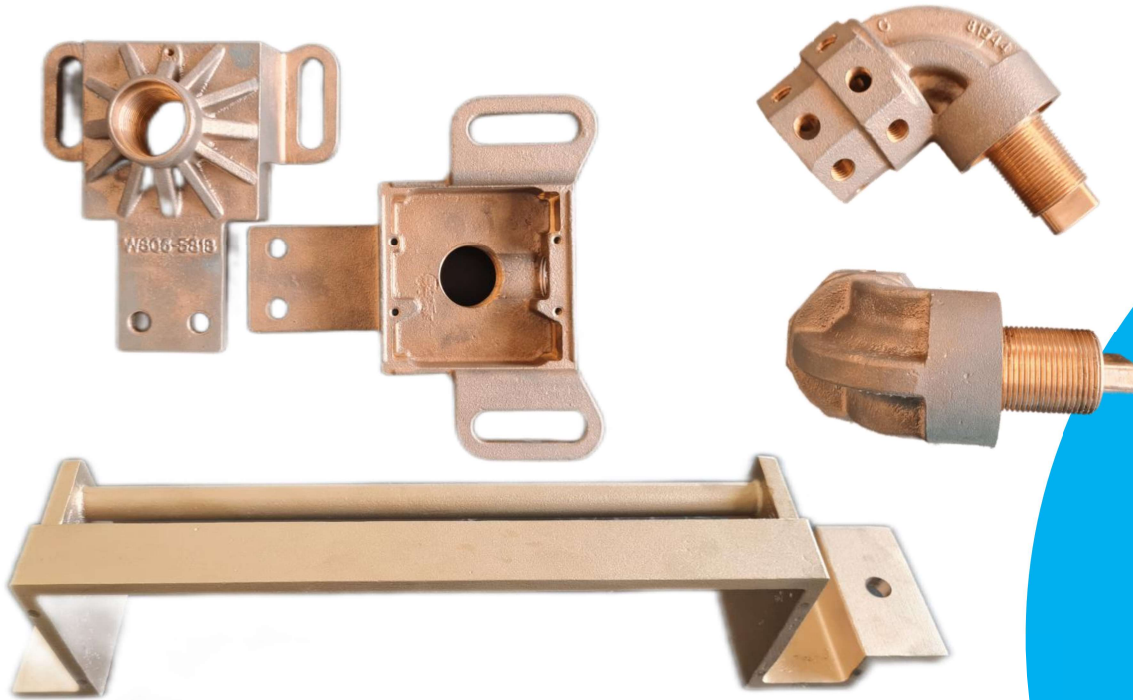


For more details like size, material, plating kindly Contact us

Since 1985

Product List

Some Other Accessories



For more details like size, material, plating kindly Contact us

Since 1985



Bath Touch Metals Inc

Address

1750 Briercroft Ct, Suite 116
Carrollton, TX 75006

bathtouchmetals.hb@gmail.com

Contact: Harry

630-890-6427



www.bathtouchmetals.net